



# SEVERE WEATHER IMPACT ON UTILITIES



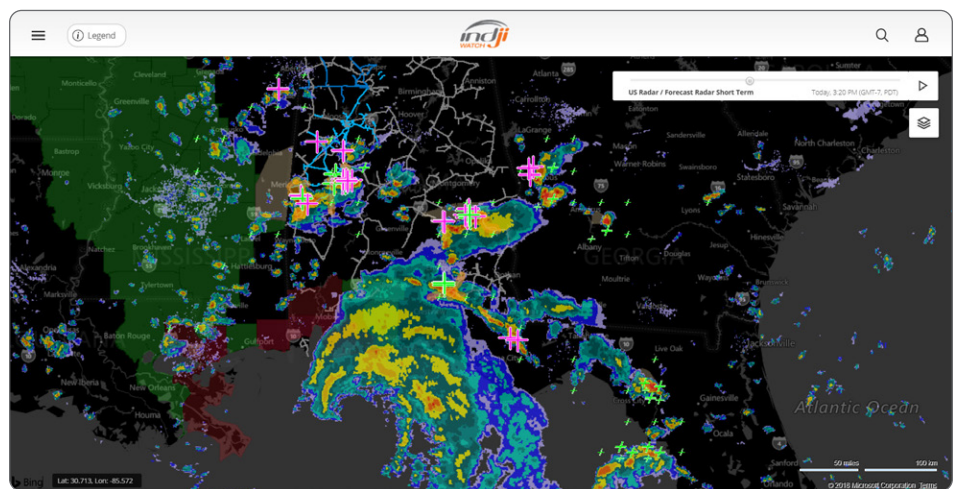
## INDJI WATCH EMPOWERS UTILITY USERS TO:

**PLAN** Advanced Forecast Radar and Forecast Lightning provide storm forecasts up to 8 hours in advance for crew scheduling, construction and maintenance planning.

**RESPOND** See a live view of all current threats specific to the utilities' own transmission lines, substations and structures with the Asset Threat Window. Receive alerts when forecasts exceed the user defined threat thresholds.

**INVESTIGATE** See the Lightning Fault Analyst for early lightning fault correlation and outage location response.

Once in a lifetime storms, droughts and wildfires are happening every year, and scientists around the world predict an increase in severe weather as our planet continues to change. Global air and water temperatures have risen over the last 50 years and NASA has found that storm formation increases by 21% for every 1.8°F rise in ocean surface temperature<sup>1</sup>. When combined with high winds, these water laden storms can be extremely destructive to utility assets. High winds coupled with extra moisture during cold months lead to severe snowstorms and icing events. The extra moisture from melting snow and heavy winter rain spur vegetation growth. That vegetation dries out during summer droughts, generating



Indji Watch Severe Weather Forecast Radar

extra fuel for wildfires, increasing the risk of power outages, damage to assets and crew safety.



With increasing severe weather and wildfire activity, utility teams need an accurate, reliable monitoring and alerting tool which gives them time to plan, respond and investigate more effectively. Details of natural hazards directly impacting grid assets allows operators to make better informed decisions to minimize outages, direct maintenance and repairs, proactively de-energize lines in extreme fire conditions and decide where to look for potential damage.

The patented Indji Watch Utility Edition from Indji Systems offers a solution that gives advanced warning and insight into hazardous weather and wildfires that disrupt utility operations and threaten assets and team safety. Indji Watch provides extreme wind forecast alerts with user selected thresholds, monitors and alerts on hazards specific to utility grid assets and provides forensic data allowing utility managers to verify faults and make informed decisions to protect equipment, saving them money and reducing sustained outages.

## References

<sup>1</sup>January 28, 2019, "Warming seas may increase frequency of extreme storms" NASA, <https://climate.nasa.gov/news/2837/warming-seas-may-increase-frequency-of-extreme-storms>